

Drum Style Chafer Hinge Tension Adjustment

CHAFFER HINGE ADJUSTMENT PROCEDURE

Perform this adjustment after use and cleaning procedures have been completed.

1. Remove the outside covers (A) from the inside covers (H) on both sides by turning counterclockwise. See Figure 1. If using a wrench, cover with a soft cloth to help prevent scratching the covers.
2. Carefully remove the rubber sleeves (B) from the spring cover (C) on both sides.
3. Rotate the chafer cover (G) to align the hole (F) with the screw (E). The screws (E) must be loose enough for nut (D) to rotate.
4. Tighten or loosen nuts (D) evenly on both sides until desired tension and cover operation is reached.
5. Rotate the chafer cover (G) to align the hole (F) with screw (E).
6. Tighten the screw (E) on both sides.
7. Lower the chafer cover (G).
8. Carefully slide the rubber sleeves (B) over the spring covers (C).
9. Install the outside covers (A) to the inside covers (H) on both sides. If using a wrench, cover with soft cloth to help prevent scratching the covers.

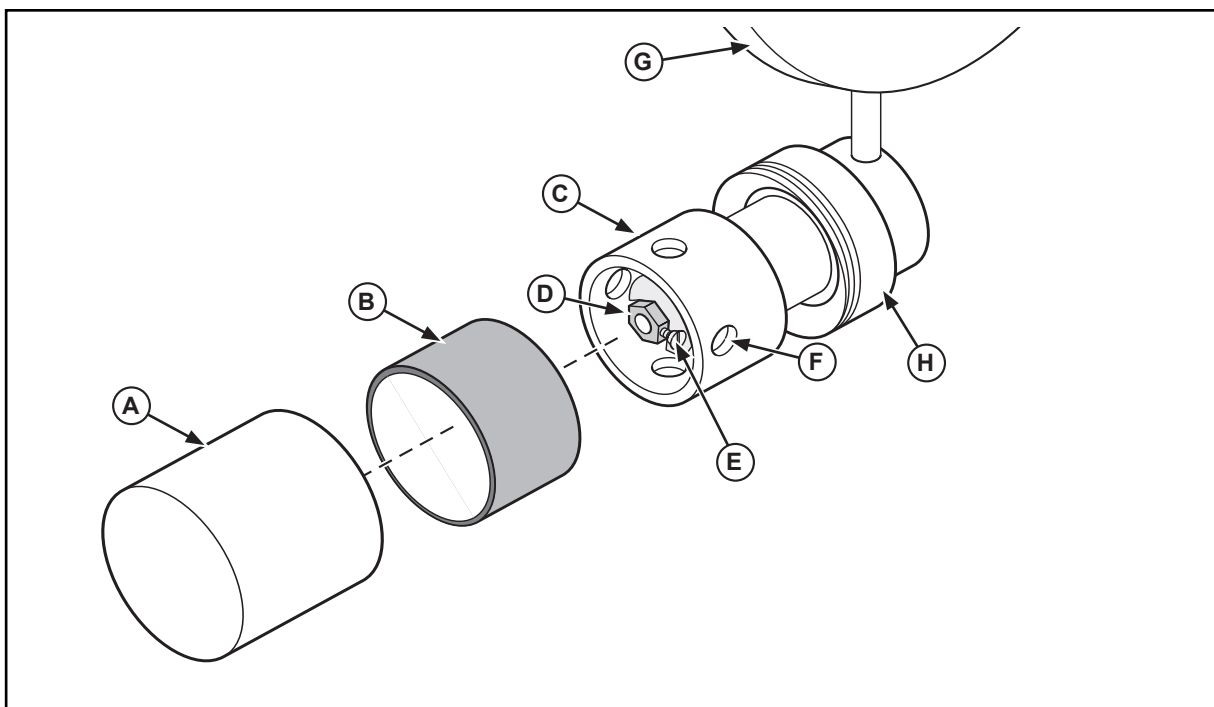


Figure 1. Drum Hinge Components.